

NE 1/4

SECTION 2, T.6N., R.2W., S.L.B. & M.

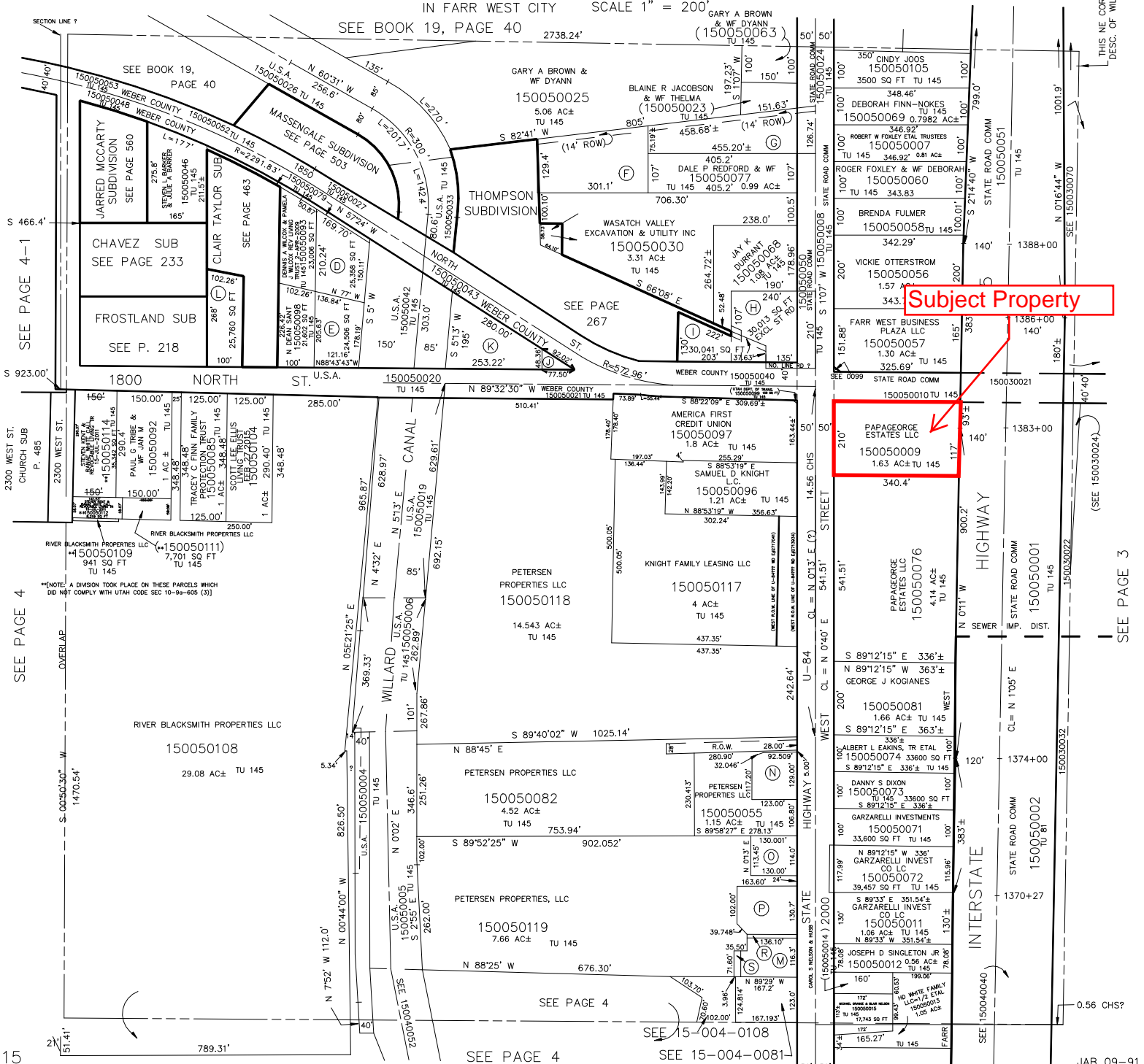
TAXING UNIT: 81, 145

IN FARR WEST CITY SCALE 1" = 200'

SEE BOOK 19, PAGE 40

2738.24'

GARY A BROWN & WF DYANN (150050063)



Subject Property

PAPAGEORGE ESTATES LLC 150050009 1.63 AC± TU 145 340.4'

*NOTE: A DIVISION TOOK PLACE ON THESE PARCELS WHICH DID NOT COMPLY WITH UTAH CODE SEC 10-99-605 (3)

15

SEE PAGE 4

SEE PAGE 4-1

SEE PAGE 4

SEE 15-004-0108

SEE PAGE 3

THIS NE COR. USED FOR DESC. OF WILLARD CANAL

5

JAB 09-91

A JAMES R MASSENGALE & WF TONYA Q 150050062 TU 145	C DENNIS G MASSENGALE & WF VICKY M 150050064 TU 145	E W.C. BODELL TRUST 09-NOV-1994 150050086 TU 145	G ROGER E JACOBSON & WF ZANETTA 150050029 1.13 AC± TU 145	I ADAM S CASTILLO 150050054 TU 145	K FARR WEST CITY 150050087 TU 145	M STEVEN M PETERSEN TRUSTEE =1/2 ETAL 150050094 21067 SQ FT TU 145	O PETERSEN PROPERTIES LLC 150050084 14,720 SQ FT TU 145	R PETERSEN PROPERTIES LLC = 1/2 ETAL 150050016 1340 SQ FT TU 145
B DENNIS G MASSENGALE & VICKY MASSENGALE 150050065 TU 145	D DENNIS G MASSENGALE & PAMELA WILCOX REV TRUST 2-APR-2009 150050080 TU 145	F WVE DEVELOPMENT LLC 150050031 1.13 AC± TU 145	H BINGHAM FAMILY, LLC-60% ETAL 150050036 TU 145	J QWEST GAS CO. 150050038 TU 145	L KEVIN LEE TAYLOR & WF WICKIE L 150050088 TU 145	N STEVEN M PETERSEN & WF PAULINE 150050017 15,543 SQ FT TU 145	P PETERSEN PROP LLC 150050075 21,001 SQ FT TU 145	S PETERSEN PROPERTIES LLC =1/2 ETAL 150050095 1314 SQ FT TU 145