

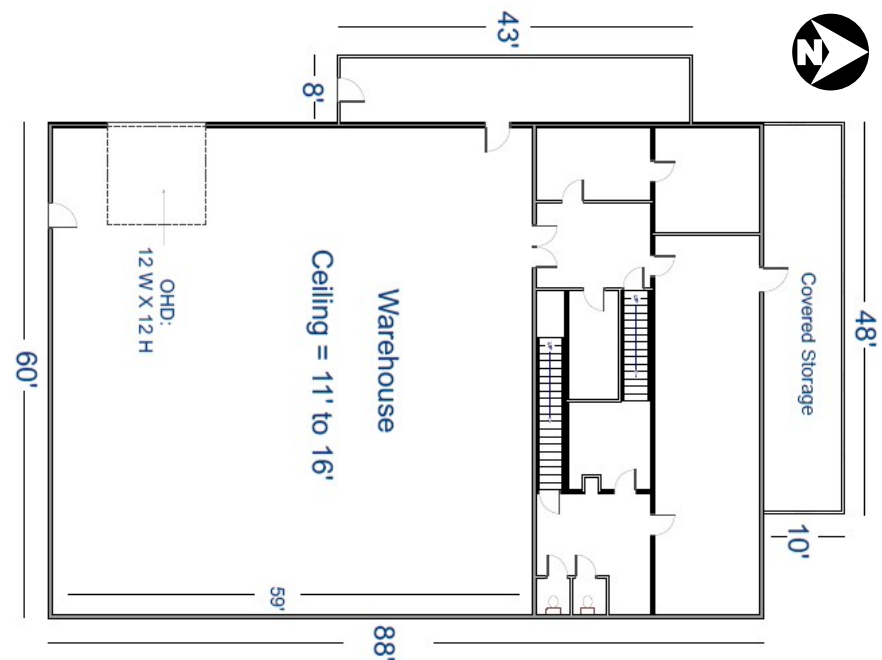
Property Tour
Online



FOR SALE OR LEASE

Property Features

- Ogden City CP-3 Zoning
- ± 0.44 Acres Total
- ± 6,510 SF Building
- Corner Lot @ 24th St & "B" Ave
- Large Warehouse with Office
- 12' x 12' Overhead Door
- Secure, Fenced Storage Yard
- Business & Trade Fixtures Not Included
- MLS # 1721337



Sale Price: \$637,700.00



www.crestutah.com

Contact
Us

Aaron McCrady
801-953-7012
aaroncrest@gmail.com

Andy McCrady
801-549-8989
andycrest@aol.com



www.crestutah.com

Contact Us

Aaron McCrady
801-953-7012
aaroncrest@gmail.com

Andy McCrady
801-549-8989
andycrest@aol.com


560 W 24th St, Ogden UT 84401

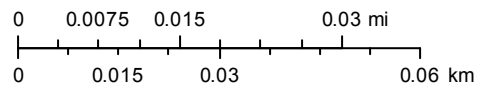
Tax #s 14-017-0015, 14-017-0016, & 14-017-0017



1/20/2021, 1:47:01 PM

1:1,128

- City Boundaries
- Street Labels
- Parcel Address
-  Parcel Master

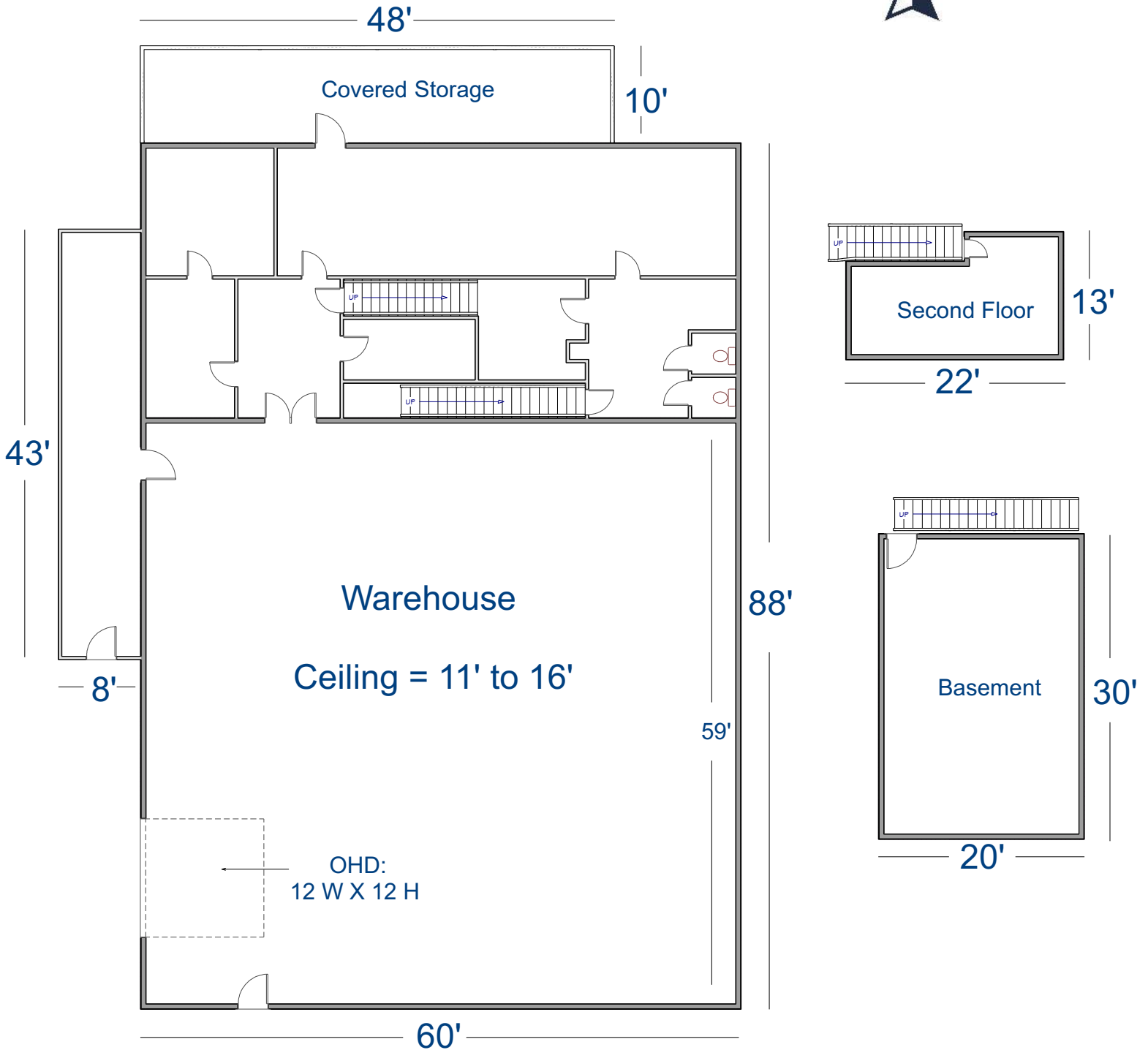


Source: Esri, Maxar, GeoEye, Earthstar Geographics, CNES/Airbus DS, USDA, USGS, AeroGRID, IGN, and the GIS User Community
Esri, HERE, Garmin, (c) OpenStreetMap contributors

**560 W 24th St,
Ogden, UT 84401**

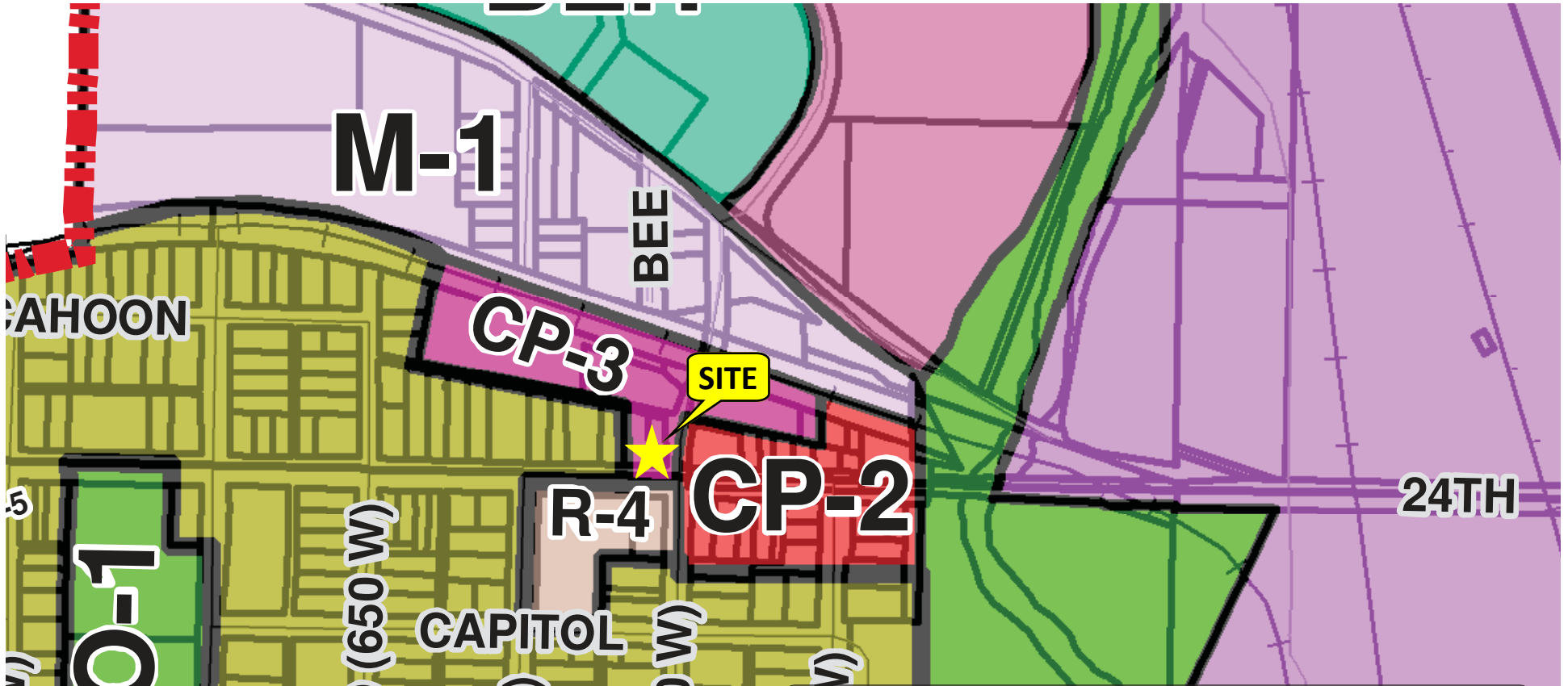
Office = 2,970
Warehouse = 3,540

Total = 6,510 Sq Ft



Ogden City Zoning

560 W 24th Street, Ogden UT 84401
 Tax #s 14-017-0015, 14-017-0016, & 14-017-0017



* This graphic and zoning information is provided as a courtesy and remains the property of Ogden City. User is advised to verify all information.

Ogden City Zoning Map

O-1, Open Space	RMH-1, Residential Manufactured Home Park	MU, Mixed-Use	Accessory Dwelling Unit
R-1-10, Single-Family Residential	PL, Professional/Institutional	CRC-1, Commercial Recreation	12th Street Corridor
R-1-8, Single-Family Residential	P/CO, Professional/Institutional Conditional Overlay	BEH, Business Exchange Historical	Sensitive Area
R-1-6, Single-Family Residential	NC-1, Limited Scale Neighborhood Commercial	BEI, Business Exchange Industrial	Airport Overlay
R-1-5, Single-Family Residential	NC-2, Expanded Scale Neighborhood Commercial	M-1, Limited Manufacturing	Ogden City Boundary
R-2, Two-Family Residential	C-1/CP-1, Neighborhood Commercial	M-2, Manufacturing and Industrial	
R-2EC, Two-Family Residential East Central	C-2/CP-2, Community Commercial	MRD, Manufacturing, Research and Development	
R-3, Multiple-Family Residential	C-2/CO, Community Commercial Conditional Overlay	DDR, Defense Depot Reuse	
R-3/CO, Multiple-Family Residential Conditional Overlay	C-3/CP-3, Regional Commercial	OCIP, Ogden Commercial and Industrial Park	
R-3EC, Multiple-Family Residential East Central	C-3/CO, Regional Commercial Conditional Overlay	A-C, Airport Commercial	
R-4, Multiple-Family Residential	CBD, Central Business District	A-I, Airport Industrial	
R-4/CO, Multiple-Family Residential Conditional Overlay	CBD/CO CBD Conditional Overlay		
R-5, Multiple-Family Residential	CBDI, CBD Intensive District		

0 1,000 2,000 4,000 6,000 8,000 Feet

Ogden UTAH
 Prepared by Ogden City Planning
 Updated February 2016