

560 W 24th St, Ogden UT 84401

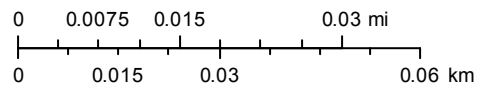
Tax #s 14-017-0015, 14-017-0016, & 14-017-0017



1/20/2021, 1:47:01 PM

1:1,128

- City Boundaries
- Street Labels
- Parcel Address
- Parcel Master



Source: Esri, Maxar, GeoEye, Earthstar Geographics, CNES/Airbus DS, USDA, USGS, AeroGRID, IGN, and the GIS User Community
Esri, HERE, Garmin, (c) OpenStreetMap contributors

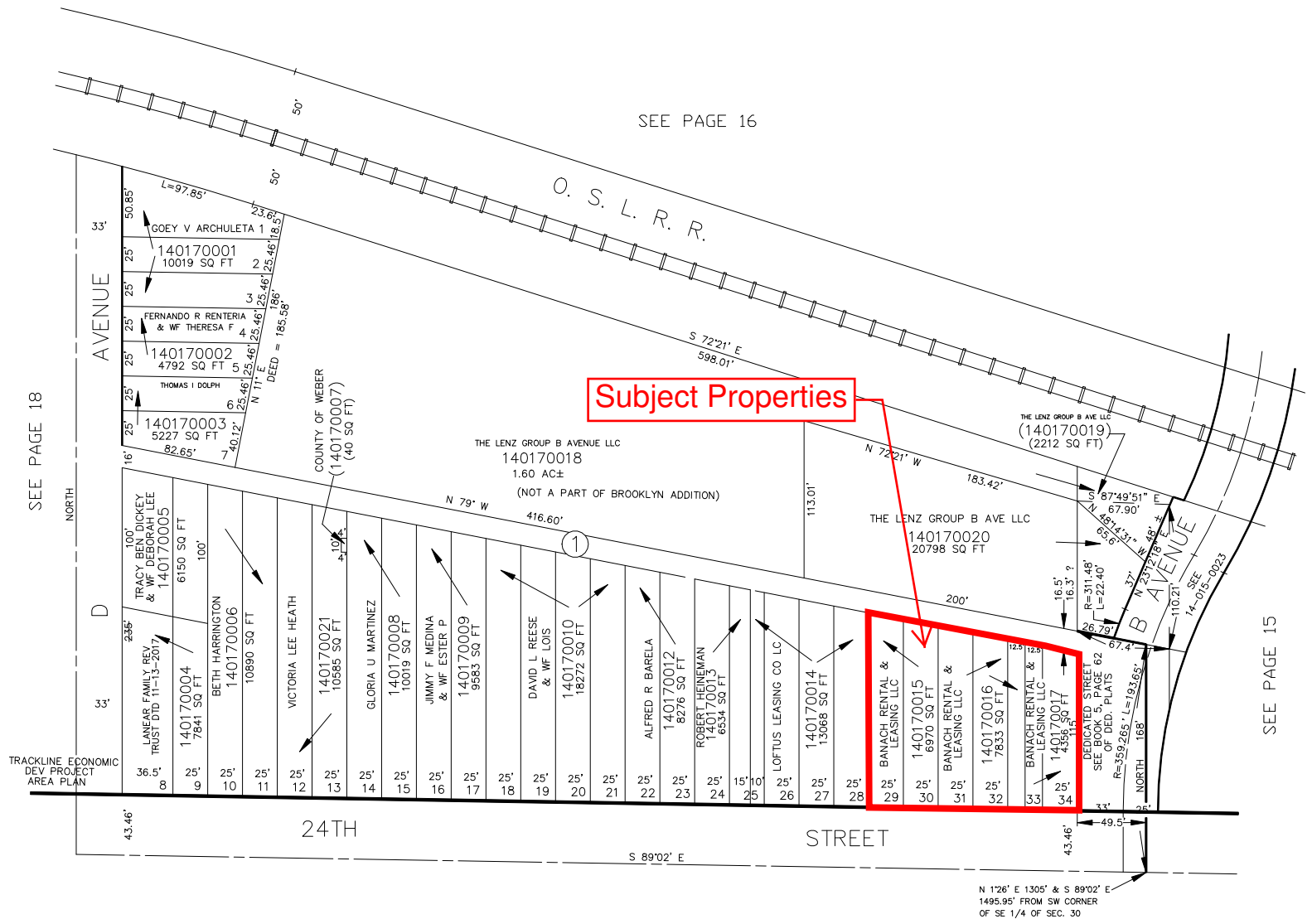
PART OF THE S.E. 1/4, SEC. 30, T.6N., R.1W., S.L.B. & M.
BROOKLYN ADDITION

TAXING UNIT: 486

BLOCK 1
 IN OGDEN CITY
 SCALE 1" = 50'

SEE PAGE 16

Subject Properties



SEE PAGE 18

SEE PAGE 15

SEE PAGE 25

DATA FROM OGDEN CITY ENG. DEPT. PLATS

FOR COMPLETE ENG DATA SEE ORIGINAL DEDICATION PLAT IN BOOK 5, PAGE 62 OF RECORDS.