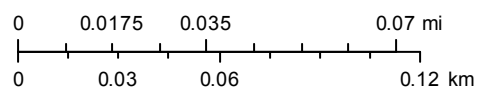


# Parcel #08-457-0003



August 14, 2020

1:2,257



City Boundaries

Street Labels

Parcel Address

 Parcel Master

World Transportation

Source: Esri, Maxar, GeoEye, Earthstar Geographics, CNES/Airbus DS, USDA, USGS, AeroGRID, IGN, and the GIS User Community  
Esri, HERE, Garmin, (c) OpenStreetMap contributors

PART OF THE NW.1/4, OF SECTION 12, T.5N., R.2W., S.L.B. & M.  
GOLDEN SPIKE TECHNOLOGY PARK

IN ROY CITY

TAXING UNIT: 186

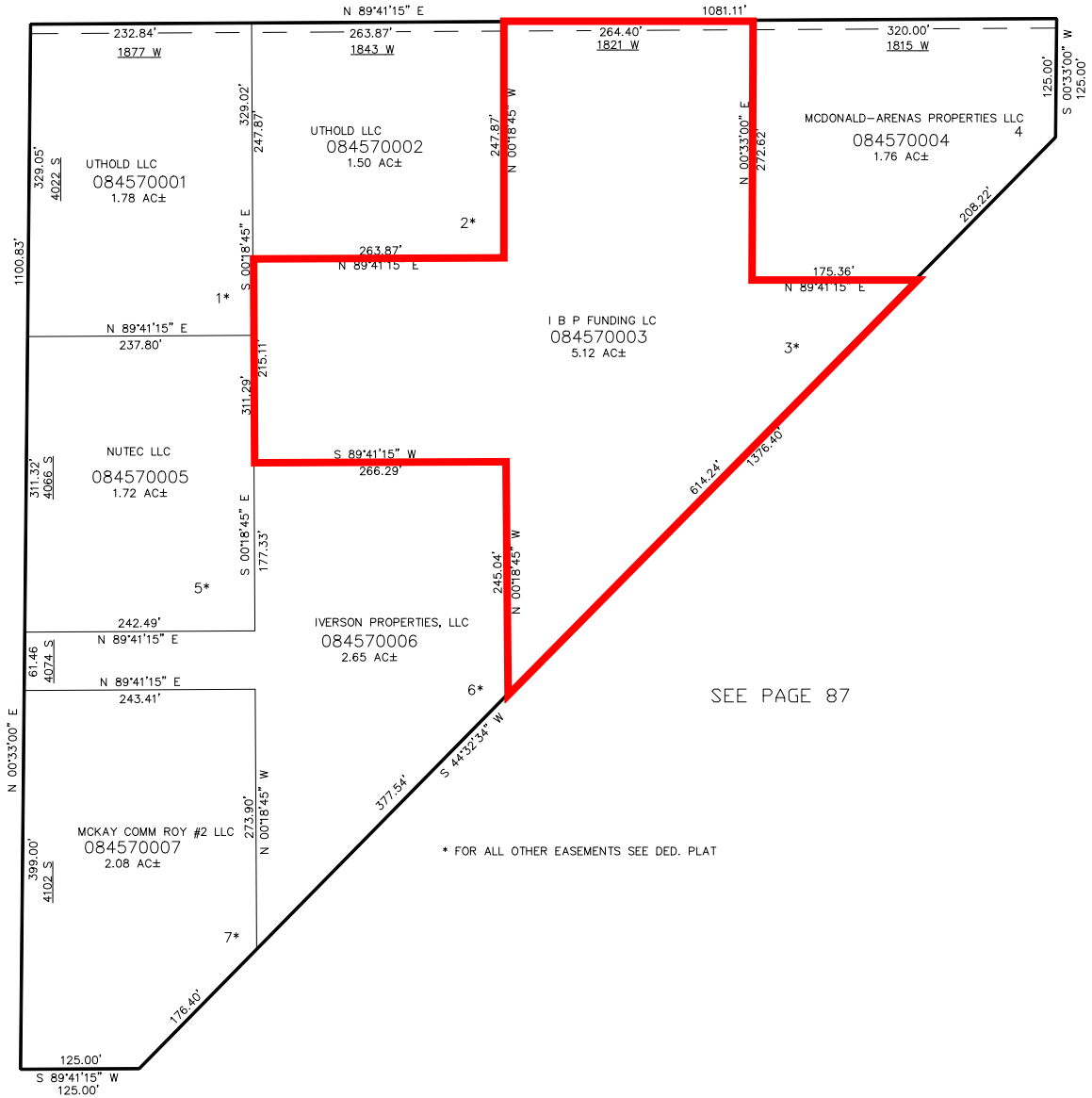
SCALE 1" = 100'

4000 SOUTH STREET

1900 WEST STREET

SEE PAGE 87

SEE PAGE 87



\* FOR ALL OTHER EASEMENTS SEE DED. PLAT

FOR COMPLETE ENG DATA SEE ORIGINAL DEDICATION PLAT IN BOOK 62, PAGE 88 OF RECORDS.

10' UTILITY & DRAINAGE EASEMENTS EACH SIDE OF PROPERTY LINES AS INDICATED BY DASHED LINES EXCEPT AS OTHERWISE SHOWN.