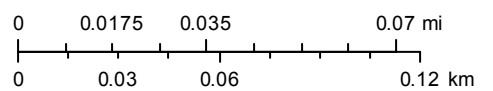



3185 Wall Ave, Ogden UT 84401



February 14, 2020

1:2,257



- City Boundaries
- Street Labels
- Parcel Address
-  Parcel Master
- World Transportation

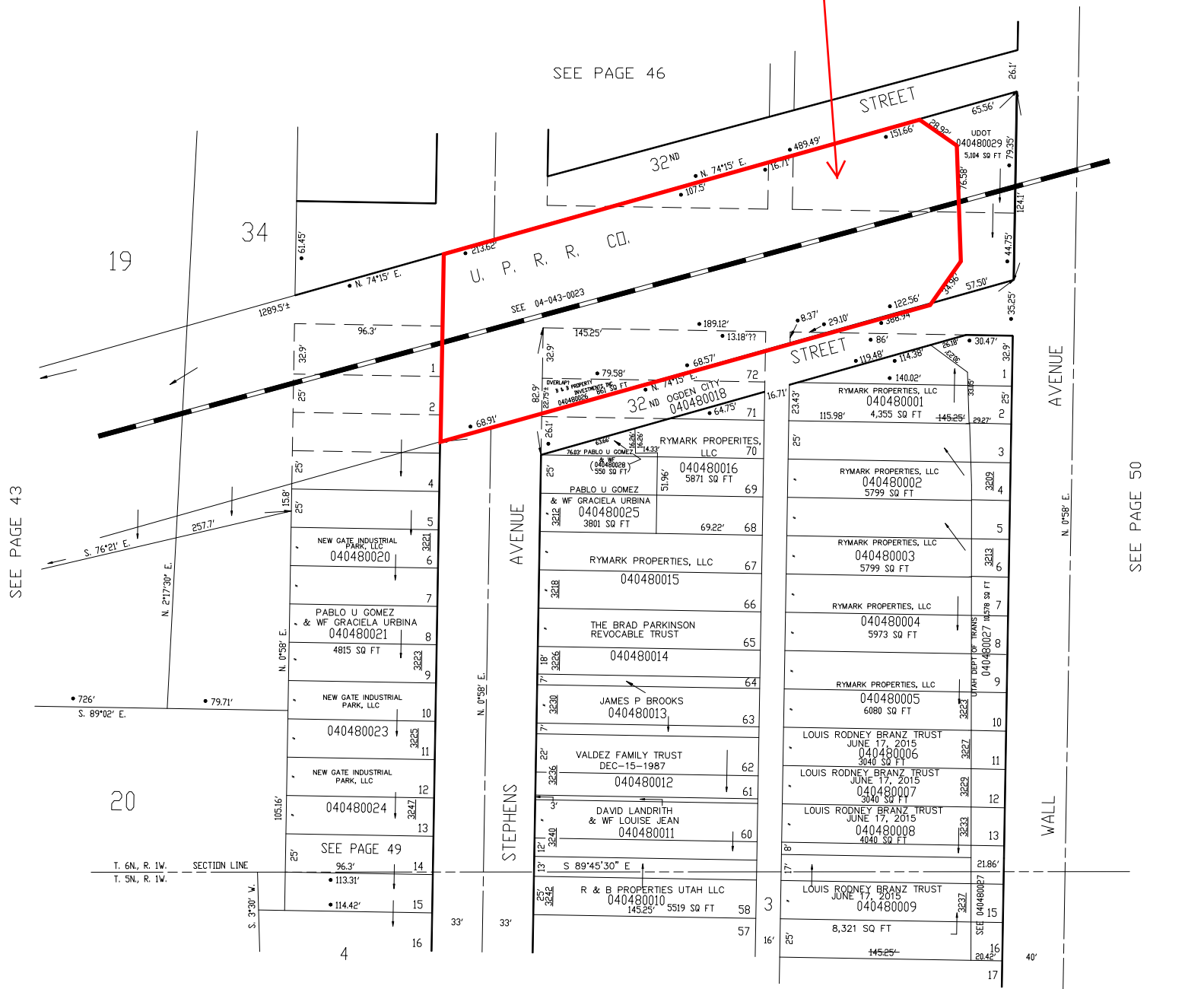
Esri, HERE, Garmin, (c) OpenStreetMap contributors
Source: Esri, DigitalGlobe, GeoEye, Earthstar Geographics, CNES/Airbus
DS, USDA, USGS, AeroGRID, IGN, and the GIS User Community

PART OF BLOCK 10, SOUTH OGDEN SURVEY & PART OF N.W. 1/4 OF SEC. 5, T.5N., R.1W., S.L.B. & M.
SOUTH PARK ADDITION

IN OGDEN CITY
 SCALE 1" = 50'

TAXING UNIT: 25

Subject Property



SEE PAGE 46

U. P. R. R. CO.
 SEE 04-043-0023

STEPHENS AVENUE

STEPHENS AVENUE

STREET

WALL AVENUE

WALL AVENUE

• OGDEN CITY ENG. DEPT. PLATS

SEE PAGE 49

SEE PAGE 43

SEE PAGE 50