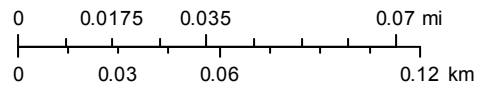


Parcel #15-125-0017



October 1, 2019

1:2,257



City Boundaries

Street Labels

Parcel Address

 Parcels

World Transportation

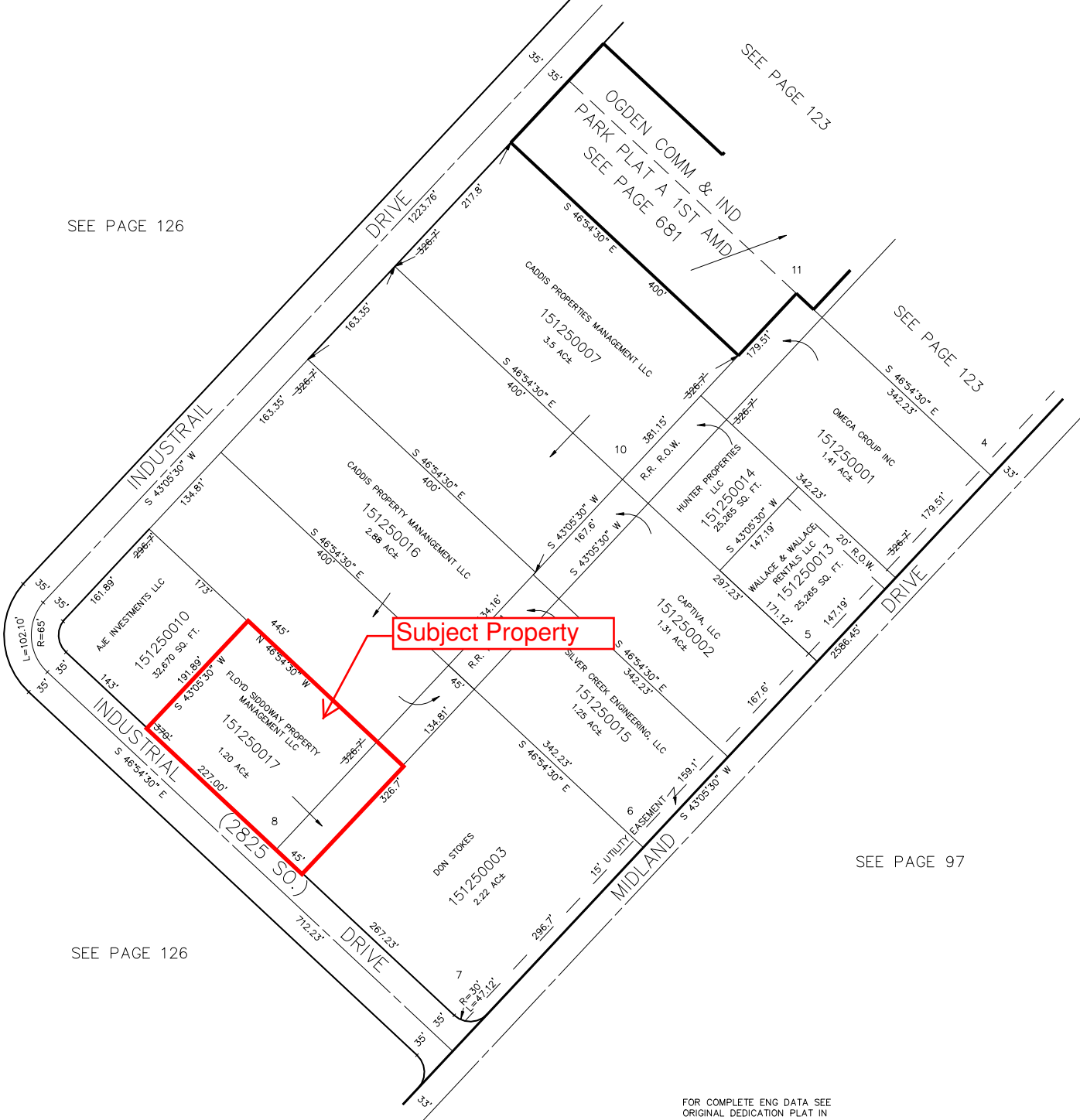
Esri, HERE, Garmin, (c) OpenStreetMap contributors
Source: Esri, DigitalGlobe, GeoEye, Earthstar Geographics, CNES/Airbus
DS, USDA, USGS, AeroGRID, IGN, and the GIS User Community

PART OF N.E. 1/4 OF SECTION 36, T.6N., R.2W., S.L.B. & M.
OGDEN COMMERCIAL & INDUSTRIAL PARK-PLAT "A"
LOTS 5-10

TAXING UNIT: 25

IN OGDEN CITY

SCALE 1"=100'



SEE PAGE 126

SEE PAGE 123

SEE PAGE 123

Subject Property

SEE PAGE 97

SEE PAGE 126

FOR COMPLETE ENG DATA SEE ORIGINAL DEDICATION PLAT IN BOOK 19, PAGES 70 & 71 OF RECORDS.