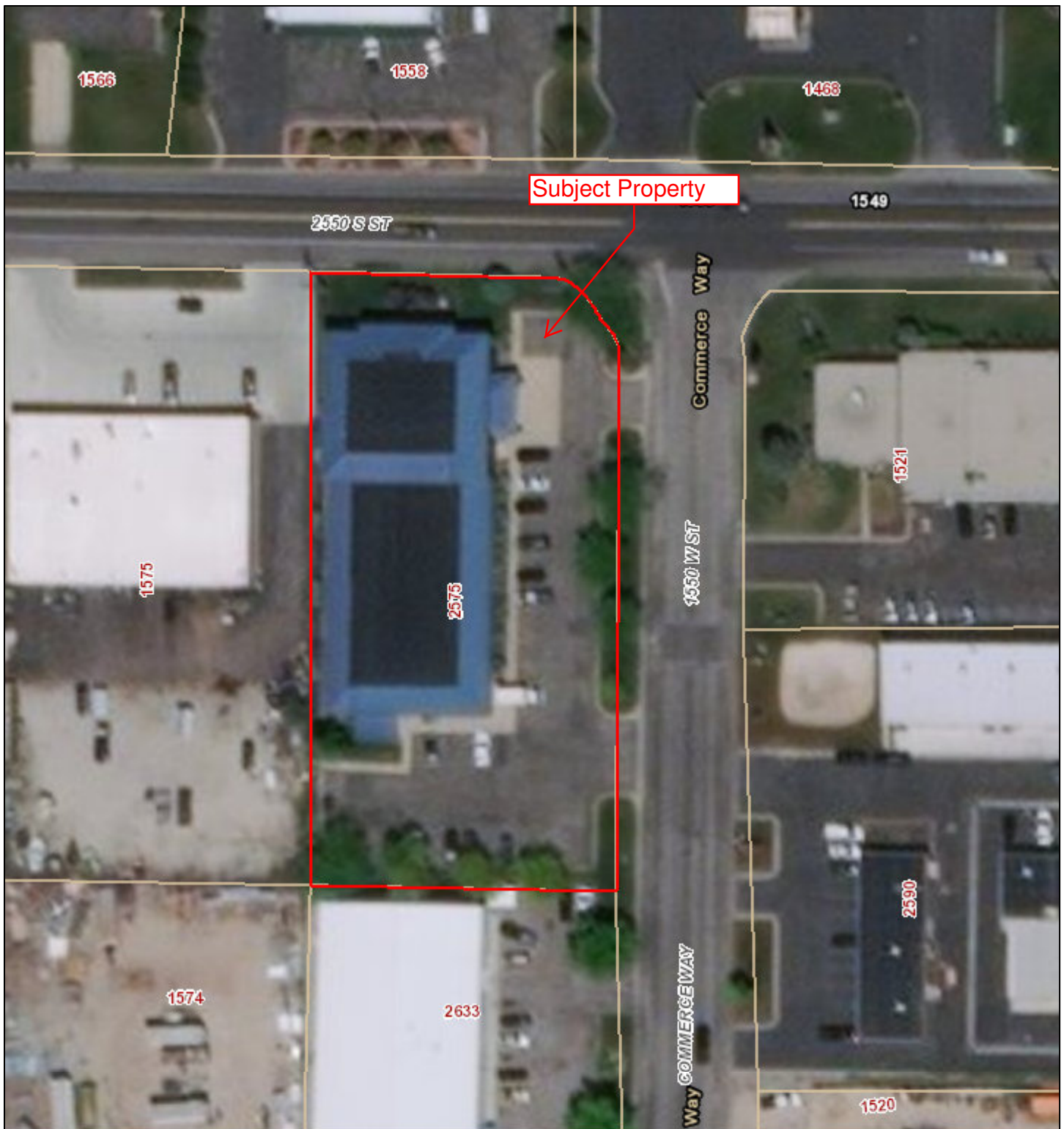
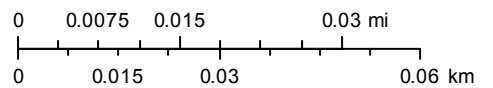



Parcel # 15-134-0012



September 18, 2019

1:1,128



- City Boundaries
- Street Labels
- Parcel Address
-  Parcels
- World Transportation

Esri, HERE, Garmin, (c) OpenStreetMap contributors
Source: Esri, DigitalGlobe, GeoEye, Earthstar Geographics, CNES/Airbus
DS, USDA, USGS, AeroGRID, IGN, and the GIS User Community

OGDEN COMMERCIAL & INDUSTRIAL PARK – PLAT "B"

LOTS 22–29, 37–42

TAXING UNIT: 25

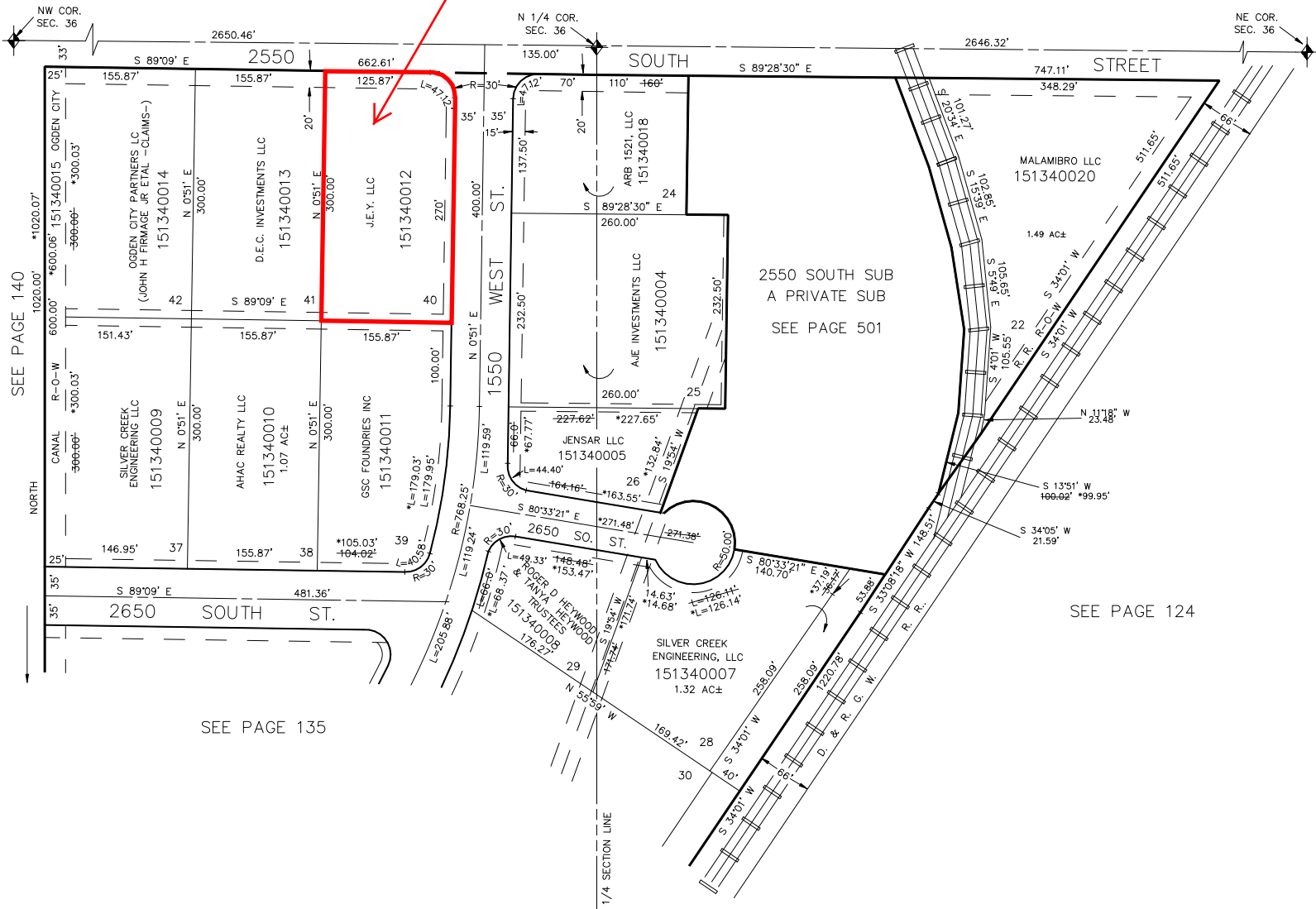
IN OGDEN CITY

SCALE 1" = 100'

Subject Property

SEE PAGE 68

SEE PAGE 67



SEE PAGE 140

NORTH

SEE PAGE 135

SEE PAGE 124

10' UTILITY & DRAINAGE EASEMENTS EACH SIDE OF PROPERTY LINES AS INDICATED BY DASHED LINES EXCEPT AS OTHERWISE SHOWN.

FOR COMPLETE ENG DATA SEE ORIGINAL DEDICATION PLAT IN BOOK 21, PAGE 41 OF RECORDS.

*SEE CORRECTION AFFIDAVIT IN BOOK 1463, PAGE 1799.