

2361 B Ave, Ogden UT 84401

Tax #s 14-017-0018, 14-017-0019, & 14-017-0020



City Boundaries



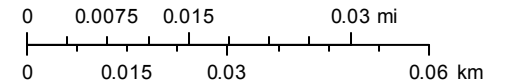
Parcel Master

Street Labels

World Transportation

Parcel Address

1:1,128



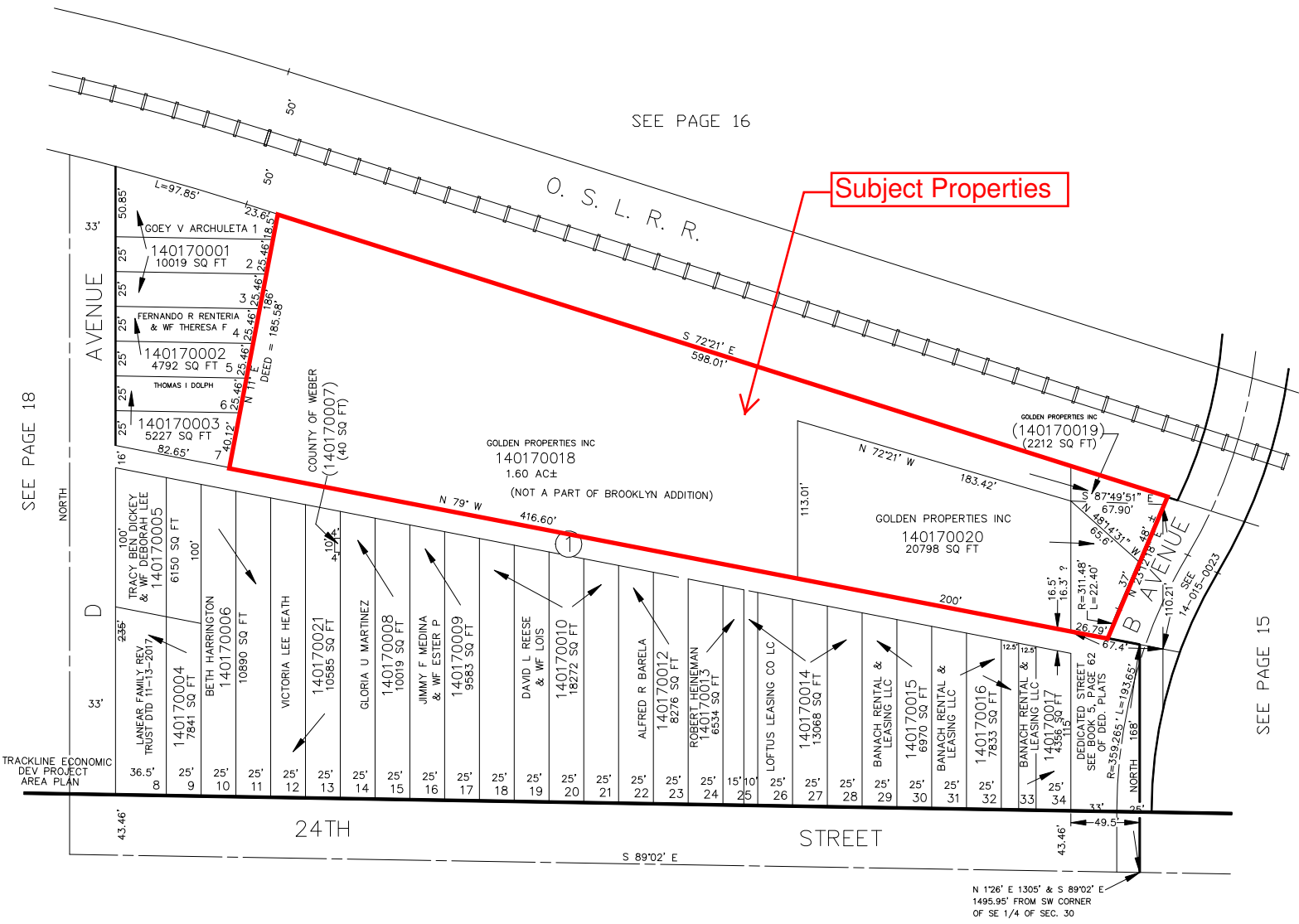
PART OF THE S.E. 1/4, SEC. 30, T.6N., R.1W., S.L.B. & M.  
**BROOKLYN ADDITION**

TAXING UNIT: 486

BLOCK 1  
 IN OGDEN CITY  
 SCALE 1" = 50'

SEE PAGE 16

**Subject Properties**



SEE PAGE 18

SEE PAGE 15

SEE PAGE 25

DATA FROM OGDEN CITY ENG. DEPT. PLATS

FOR COMPLETE ENG DATA SEE ORIGINAL DEDICATION PLAT IN BOOK 5, PAGE 62 OF RECORDS.